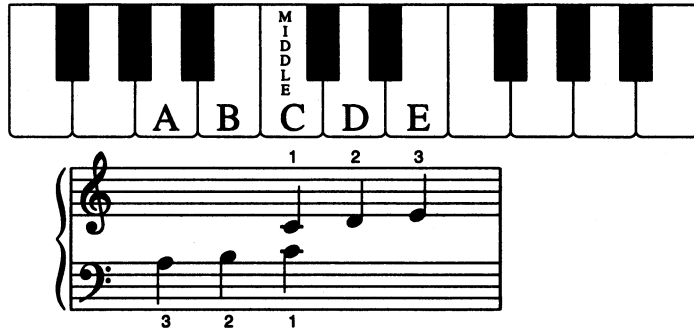


Hand position for Etudes 1, 2 and 3.



**Etude No. 1**

Christine O'Neil

**Etude No. 2**

Hand position for the key of F Major.

A diagram showing the hand position for the key of F Major. The piano keyboard is shown with the first five fingers of the right hand placed on the keys F, G, A, Bb, and C. The left hand is shown with the first five fingers on the keys C, F, G, A, and Bb. Below the keyboard, a short musical notation in treble and bass clefs shows the first five notes of the scale: F, G, A, Bb, C. Fingerings are indicated: 1-2-3-4-5 for the right hand and 5-4-3-2-1 for the left hand.

Etude No. 24

Musical score for Etude No. 24 in F major, 3/4 time. The piece consists of two systems of two staves each. The first system has four measures. The right hand plays a melodic line with eighth notes and quarter notes, while the left hand provides a bass line with quarter notes and eighth notes. Fingerings are indicated above and below notes. The second system continues the piece with similar melodic and bass lines, ending with a double bar line.

Etude No. 25

Musical score for Etude No. 25 in F major, 3/4 time. The piece consists of two systems of two staves each. The first system has four measures. The right hand plays a melodic line with eighth notes and quarter notes, while the left hand provides a bass line with quarter notes and eighth notes. Fingerings are indicated above and below notes. The second system continues the piece with similar melodic and bass lines, ending with a double bar line.