

Étude 1

Les chutes noires

Denis Dionne

$\text{♩} = 60 \text{ à } 120$

Musical score for 'Les chutes noires' in C major, 2/4 time. The score consists of 16 measures, numbered 1 through 16. The first measure (1) starts with a forte dynamic 'f'. The notes are: 1. C4, 2. D4, 3. E4, 4. F4, 5. G4, 6. A4, 7. B4, 8. C5, 9. B4, 10. A4, 11. G4, 12. F4, 13. E4, 14. D4, 15. C4, 16. B3. The piece ends with a double bar line.

© Editions François Dhalmann

À toi de jouer...

Four empty musical staves, numbered 1 through 16, corresponding to the measures of the first piece. Each staff is a five-line staff with a treble clef and a common time signature 'C'. The staves are intended for the student to practice the piece.

OUVRAGE PROTÉGÉ
PHOTOCOPIÉ
INTERDITE
MÊME PARTIELLE
SANS AUTORISATION

Étude 4

La valse décroche

Denis Dionne

♩ = 60 à 120

4
7
10
13
16
19

© Editions François Dalmann

À toi de jouer...

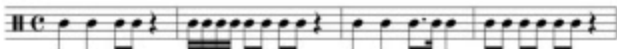
4
7
10
13
16
19

Étude 8

Point d'accroche

Denis Dionne

♩ = 60 à 120



© Editions François Dhalmann

À toi de jouer...

♩ = 60 à 120

